



BEST CORNER
IN
EUREKA, MO

CONCEPTUAL
PAD SITES
PAGE 3

HWY 109
AT
AUGUSTINE RD

SIGNALIZED
INTERSECTION



8 LEGENDS PARKWAY

EUREKA, MO 63025

3.45 ACRES READY FOR GROUND LEASE OR BTS. ADJACENT
TO MERCY MEDICAL OFFICE BUILDING AND RETAIL.

8 LEGENDS PARKWAY

PICTURES & DEMOGRAPHICS

PLEASE CONTACT:

L³ CORPORATION

JOHN NOTTER




314.282.9825 (DIRECT)

314.650.3600 (MOBILE)

JOHN@L3CORP.NET



POPULATION ANALYSIS

POPULATION	 <u>3 MILE</u> 16,265	<u>5 MILES</u> 26,630	<u>10 MILES</u> 238,242
HOUSEHOLDS	 <u>3 MILE</u> 5,467	<u>5 MILES</u> 9,219	<u>10 MILES</u> 91,444
AVG HH INCOME	 <u>3 MILE</u> \$135,332	<u>5 MILES</u> \$132,683	<u>10 MILES</u> \$116,371

VIEW &
DOWNLOAD:

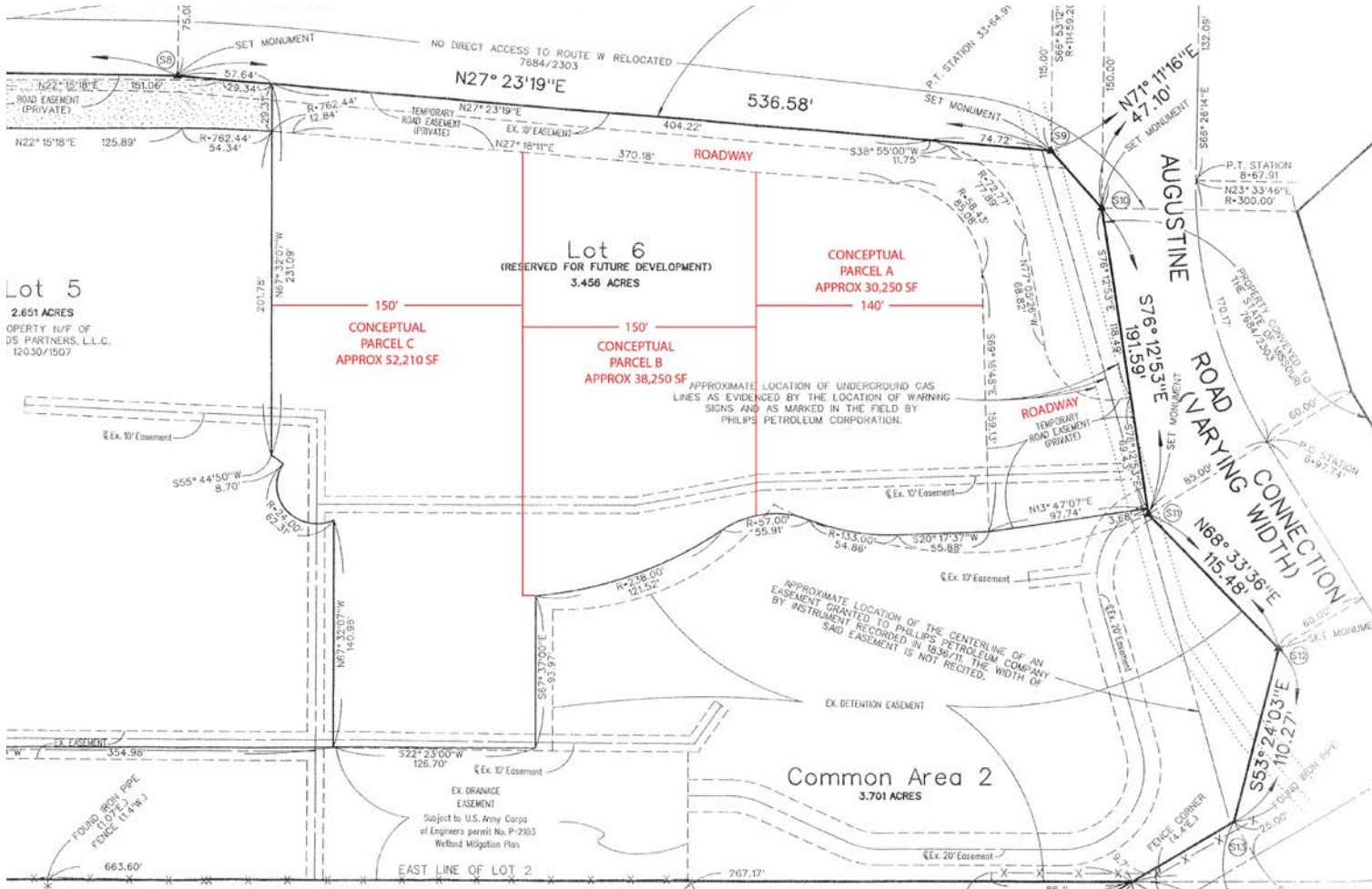
DEMO REPORT

8 LEGENDS PARKWAY

SITE PLAN

PLEASE CONTACT: L³ CORPORATION
JOHN NOTTER
314.282.9825 (DIRECT)
314.650.3600 (MOBILE)
JOHN@L3CORP.NET

- LAND READY FOR REDEVELOPMENT ADJACENT TO MERCY MEDICAL; OFFICE, RESTAURANT AND RETAIL - LOT 6
- GROUND LEASE OPPORTUNITY CONTACT BROKER FOR PRICING
- 3.455 ACRES OF WHICH APPROXIMATELY 2.77 ACRES IS USABLE
- CAPTURES EXISTING & PLANNED HOMES SOUTH OF I-44



8 LEGENDS PARKWAY

ZOOM AERIAL

PLEASE CONTACT:

L³ CORPORATION

JOHN NOTTER

314.282.9825 (DIRECT)

314.650.3600 (MOBILE)

JOHN@L3CORP.NET



The information in this flyer has been obtained from sources believed reliable. While we do not doubt its accuracy, we have not verified it and make no guarantee about it. It is your responsibility to independently confirm its accuracy and completeness. Any projections, opinions, assumptions or estimates used are for example only and do not represent the current or future performance of the property. The value of this transaction to you depends on tax and other factors which should be evaluated by your tax, financial and legal advisors. You and your advisors should conduct a careful, independent investigation of the property to determine to your satisfaction the suitability of the property for your needs.

8 LEGENDS PARKWAY

MARKET AERIAL

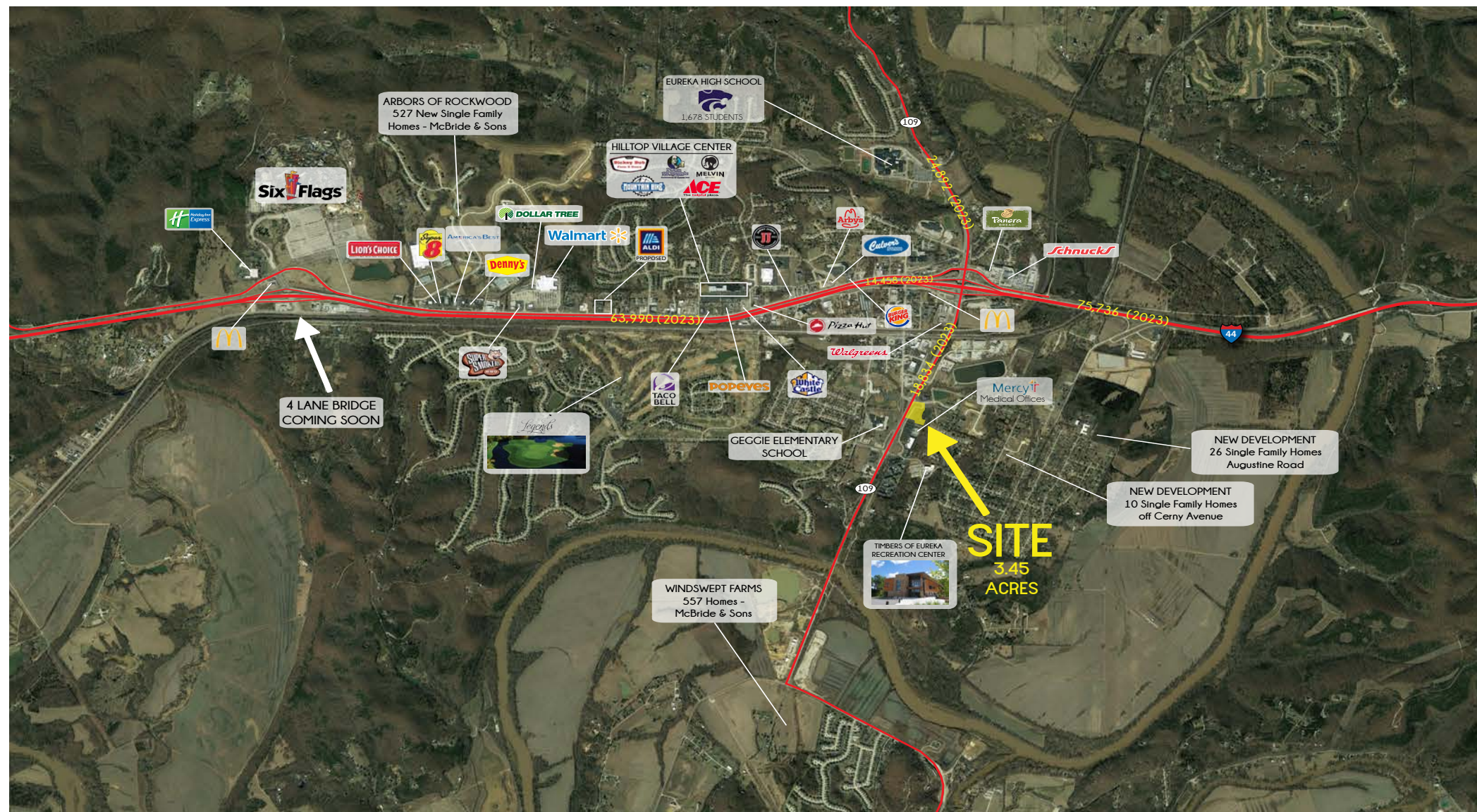
PLEASE CONTACT: L³ CORPORATION

JOHN NOTTER

314.282.9825 (DIRECT)

314.650.3600 (MOBILE)

JOHN@L3CORP.NET



The information in this flyer has been obtained from sources believed reliable. While we do not doubt its accuracy, we have not verified it and make no guarantee about it. It is your responsibility to independently confirm its accuracy and completeness. Any projections, opinions, assumptions or estimates used are for example only and do not represent the current or future performance of the property. The value of this transaction to you depends on tax and other factors which should be evaluated by your tax, financial and legal advisors. You and your advisors should conduct a careful, independent investigation of the property to determine to your satisfaction the suitability of the property for your needs.