



1 Elevation A (East)  
R NTS.



2 Elevation B (North)  
R NTS.



# RICHLAND COUNTY MALL

535 N. WEST ST. OLNEY, IL 62450

1,436 SF (+/- 0.5 AC) OUTLOT AVAILABLE  
IN RULER FOODS AND GLIK'S ANCHORED CENTER

# RICHLAND COUNTY MALL

## DEMOGRAPHICS

PLEASE CONTACT:

L<sup>3</sup> CORPORATION

RICK SPECTOR  
DESIGNATED MANAGING BROKER

314.282.9827 (DIRECT)

314.708.2009 (MOBILE)

RICH@L3CORP.NET

GO TO:

SITE PLAN

PICTURES

MARKET AERIAL

## VISIT METRICS

DEC 1<sup>st</sup>, 2023 - NOV 30<sup>th</sup>, 2024 • DATA PROVIDED BY PLACER

VISITS/YEAR



554.3 K

VISITORS



70.4 K

VISIT FREQUENCY



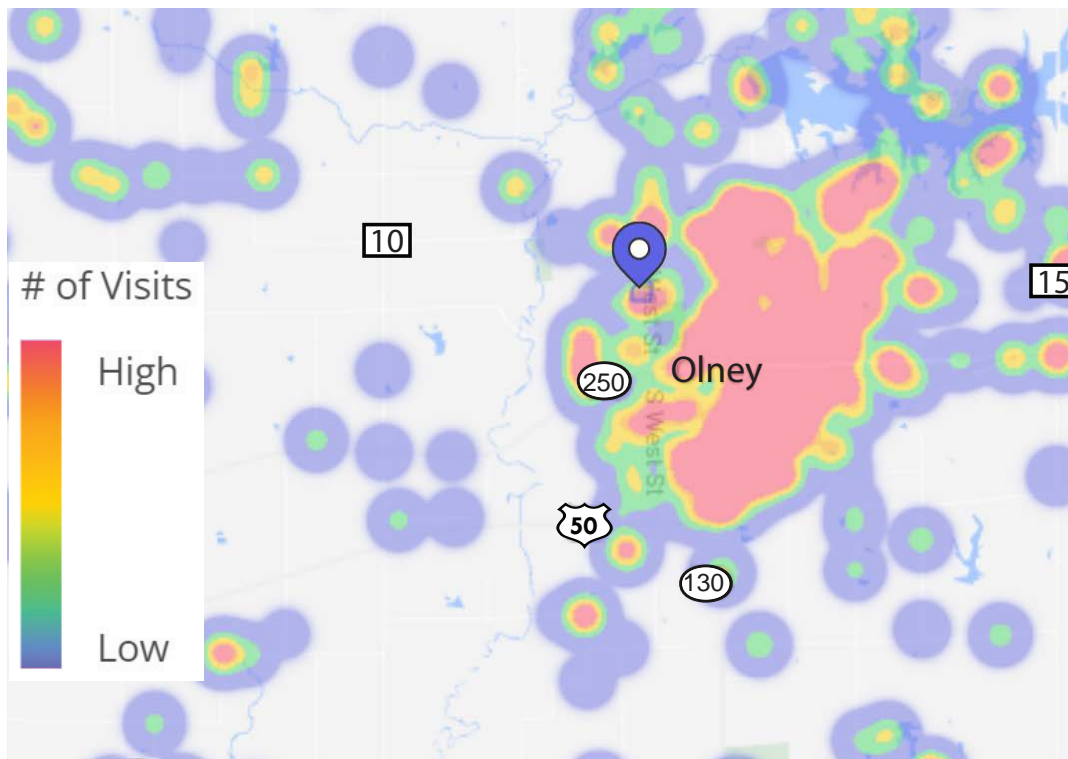
7.87

AVG. DWELL TIME



27 MIN

## HEAT MAP • PER PLACER.AI



## POPULATION ANALYSIS

POPULATION		<u>15 MILE</u> 22,804	<u>30 MILES</u> 96,087
HOUSEHOLDS		<u>15 MILE</u> 8,686	<u>30 MILES</u> 38,911
AVG HH INCOME		<u>15 MILE</u> \$68,586	<u>30 MILES</u> \$67,738



VIEW & DOWNLOAD:

PLACER.AI REPORT

DEMO REPORT

# RICHLAND COUNTY MALL

## SITE PLAN

PLEASE CONTACT:

L<sup>3</sup> CORPORATION

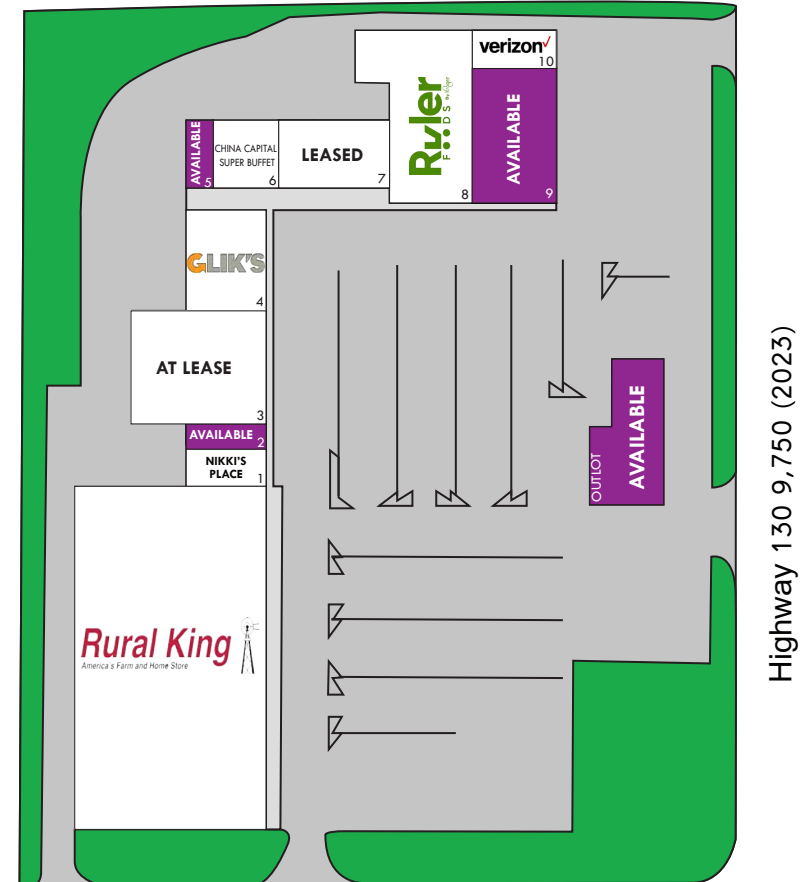
RICK SPECTOR  
DESIGNATED MANAGING BROKER

314.282.9827 (DIRECT)

314.708.2009 (MOBILE)

RICH@L3CORP.NET

<u>SPACE</u>	<u>TENANT</u>	<u>SF</u>
1	NIKKI'S PLACE	1,765 SF
2	AVAILABLE	1,292 SF
3	AT LEASE	19,500 SF
4	GLIK'S	6,711 SF
5	AVAILABLE	1,440 SF
6	CHINA CAPITAL SUPER BUFFET	3,495 SF
7	LEASED	4,915 SF
8	RULER FOODS	19,000 SF
9	AVAILABLE	12,003 SF
10	VERISON	2,904 SF
OUTLOT	AVAILABLE	1,436 SF (± 0.5 AC)
NAP	RURAL KING	67,000 SF



- RULER FOODS AND GLIK'S ANCHORED SITE
- SHADOW ANCHORED BY RURAL KING
- JR. ANCHOR, OUTLOT AND SMALL SHOP SPACE AVAILABLE
- 1,436 SF (+/- 0.5 AC) OUTLOT AVAILABLE
- LEASE RATE: CALL BROKER FOR DETAILS



# RICHLAND COUNTY MALL

## PHOTOS

PLEASE CONTACT:

L<sup>3</sup> CORPORATION

RICK SPECTOR  
DESIGNATED MANAGING BROKER

314.282.9827 (DIRECT)

314.708.2009 (MOBILE)

RICH@L3CORP.NET



- FULL RENOVATION, INCLUDING RENOVATED FACADES AND PARKING LOT, COMING IN LATE 2025
- NEW TO MARKET APPAREL ANCHOR SET TO OPEN IN LATE 2025
- RULER FOODS, GLIKS, AND HIBBETT SPORTING GOODS ANCHORED CENTER
- SHADOW ANCHORED BY RURAL KING
- FORMER BANK OUTLOT NOW AVAILABLE (+/- 0.5 ACRES)



# RICHLAND COUNTY MALL

## MARKET AERIAL

PLEASE CONTACT:

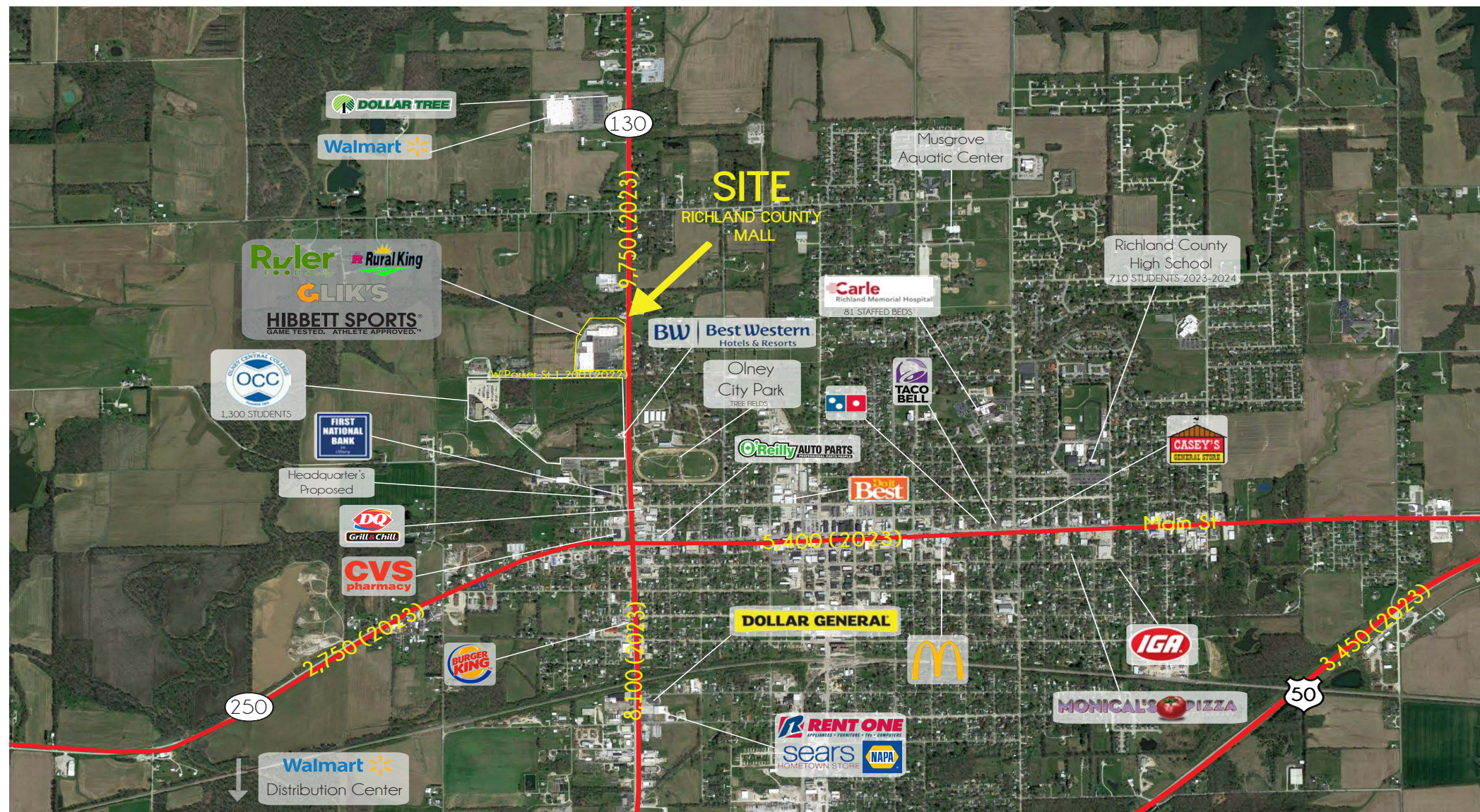
L<sup>3</sup> CORPORATION

RICK SPECTOR  
DESIGNATED MANAGING BROKER

314.282.9827 (DIRECT)

314.708.2009 (MOBILE)

RICH@L3CORP.NET



The information in this flyer has been obtained from sources believed reliable. While we do not doubt its accuracy, we have not verified it and make no guarantee about it. It is your responsibility to independently confirm its accuracy and completeness. Any projections, opinions, assumptions or estimates used are for example only and do not represent the current or future performance of the property. The value of this transaction to you depends on tax and other factors which should be evaluated by your tax, financial and legal advisors. You and your advisors should conduct a careful, independent investigation of the property to determine to your satisfaction the suitability of the property for your needs.