



1
R Elevation A (East)
NTS.



2
R Elevation B (North)
NTS.

RICHLAND COUNTY MALL

535 N. WEST ST. OLNEY, IL 62450

1,436 SF (+/- 0.5 AC) OUTLOT AVAILABLE
IN RULER FOODS AND GLIK'S ANCHORED CENTER



RICHLAND COUNTY MALL

DEMOGRAPHICS

PLEASE CONTACT:

TIM GEARHART

314.282.9826 (DIRECT)

315.569.9812 (MOBILE)

TIM@L3CORP.NET

L³ CORPORATION

RICK SPECTOR
DESIGNATED MANAGING BROKER

314.282.9827 (DIRECT)

314.708.2009 (MOBILE)

RICK@L3CORP.NET

GO TO:

SITE PLAN

PICTURES

MARKET AERIAL

VISIT METRICS

DEC 1st, 2023 - NOV 30th, 2024 • DATA PROVIDED BY PLACER

VISITS/YEAR



554.3 K

VISITORS



70.4 K

VISIT FREQUENCY



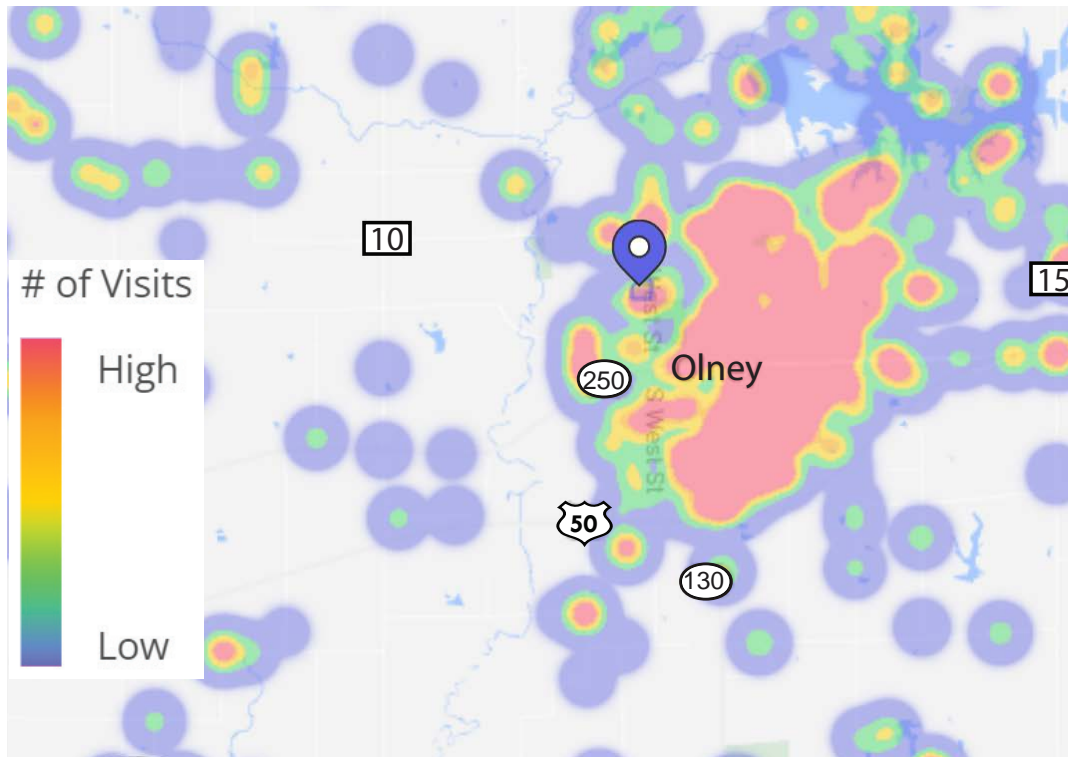
7.87

AVG. DWELL TIME



27 MIN

HEAT MAP • PER PLACER.AI



POPULATION ANALYSIS

POPULATION



15 MILE

22,804

30 MILES

96,087

HOUSEHOLDS



15 MILE

8,686

30 MILES

38,911

AVG HH INCOME



15 MILE

\$68,586

30 MILES

\$67,738



VIEW & DOWNLOAD:

PLACER.AI REPORT

DEMO REPORT

RICHLAND COUNTY MALL

SITE PLAN

PLEASE CONTACT:

TIM GEARHART

314.282.9826 (DIRECT)

315.569.9812 (MOBILE)

TIM@L3CORP.NET

L³ CORPORATION

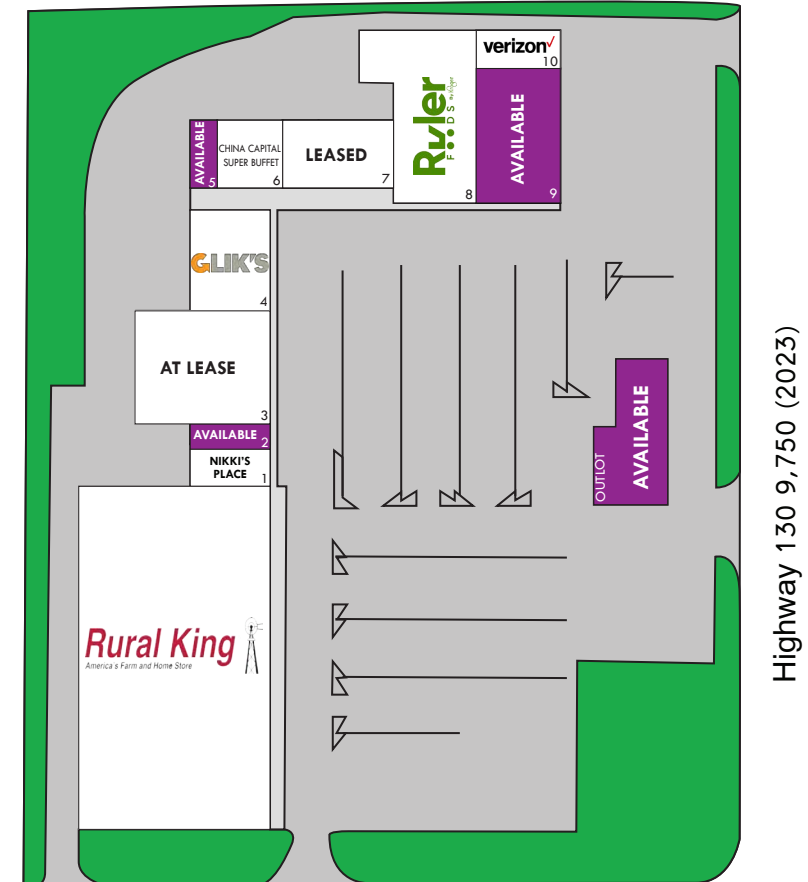
RICK SPECTOR
DESIGNATED MANAGING BROKER

314.282.9827 (DIRECT)

314.708.2009 (MOBILE)

RICK@L3CORP.NET

<u>SPACE</u>	<u>TENANT</u>	<u>SF</u>
1	NIKKI'S PLACE	1,765 SF
2	AVAILABLE	1,292 SF
3	AT LEASE	19,500 SF
4	GLIK'S	6,711 SF
5	AVAILABLE	1,440 SF
6	CHINA CAPITAL SUPER BUFFET	3,495 SF
7	LEASED	4,915 SF
8	RULER FOODS	19,000 SF
9	AVAILABLE	12,003 SF
10	VERISON	2,904 SF
OUTLOT	AVAILABLE	1,436 SF (± 0.5 AC)
NAP	RURAL KING	67,000 SF



- RULER FOODS AND GLIK'S ANCHORED SITE
- SHADOW ANCHORED BY RURAL KING
- JR. ANCHOR, OUTLOT AND SMALL SHOP SPACE AVAILABLE
- 1,436 SF (+/- 0.5 AC) OUTLOT AVAILABLE
- LEASE RATE: CALL BROKER FOR DETAILS



RICHLAND COUNTY MALL

PHOTOS

PLEASE CONTACT:

TIM GEARHART

314.282.9826 (DIRECT)

315.569.9812 (MOBILE)

TIM@L3CORP.NET

L³ CORPORATION

RICK SPECTOR

DESIGNATED MANAGING BROKER

314.282.9827 (DIRECT)

314.708.2009 (MOBILE)

RICK@L3CORP.NET



- FULL RENOVATION, INCLUDING RENOVATED FACADES AND PARKING LOT, COMING IN LATE 2025
- NEW TO MARKET APPAREL ANCHOR SET TO OPEN IN 2026
- RULER FOODS, GLIKS, AND HIBBETT SPORTING GOODS ANCHORED CENTER
- SHADOW ANCHORED BY RURAL KING
- FORMER BANK OUTLOT NOW AVAILABLE (+/- 0.5 ACRES)



RICHLAND COUNTY MALL

MARKET AERIAL

PLEASE CONTACT:

L³ CORPORATION

TIM GEARHART

RICK SPECTOR

DESIGNATED MANAGING BROKER

314.282.9826 (DIRECT)

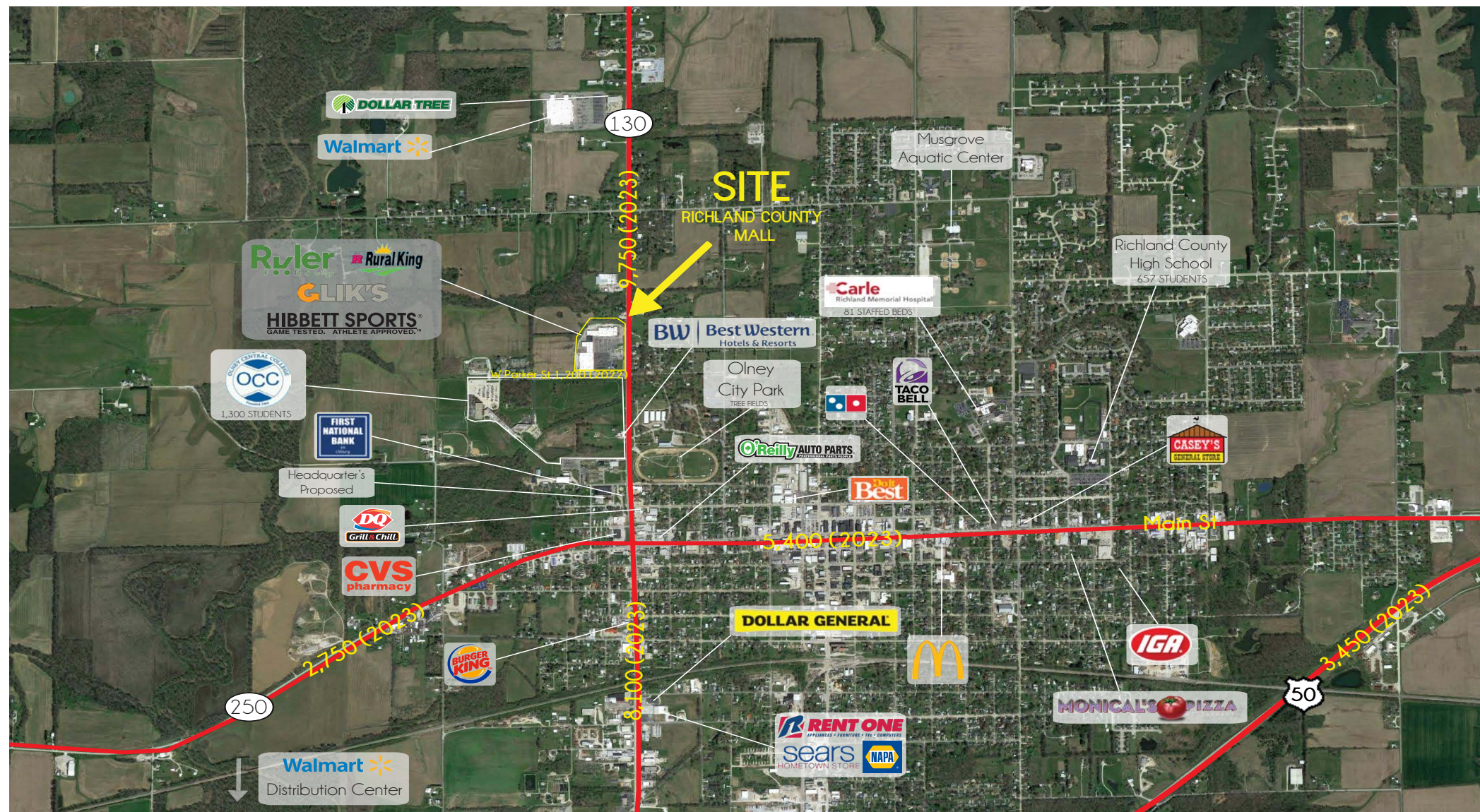
314.282.9827 (DIRECT)

315.569.9812 (MOBILE)

314.708.2009 (MOBILE)

TIM@L3CORP.NET

RICK@L3CORP.NET



The information in this flyer has been obtained from sources believed reliable. While we do not doubt its accuracy, we have not verified it and make no guarantee about it. It is your responsibility to independently confirm its accuracy and completeness. Any projections, opinions, assumptions or estimates used are for example only and do not represent the current or future performance of the property. The value of this transaction to you depends on tax and other factors which should be evaluated by your tax, financial and legal advisors. You and your advisors should conduct a careful, independent investigation of the property to determine to your satisfaction the suitability of the property for your needs.