



ALL OFFERS ARE
SUBJECT TO
APPROVAL BY
WALGREENS' REAL
ESTATE COMMITTEE



5550 S. GRAND BOULEVARD

ST. LOUIS, MO 63111

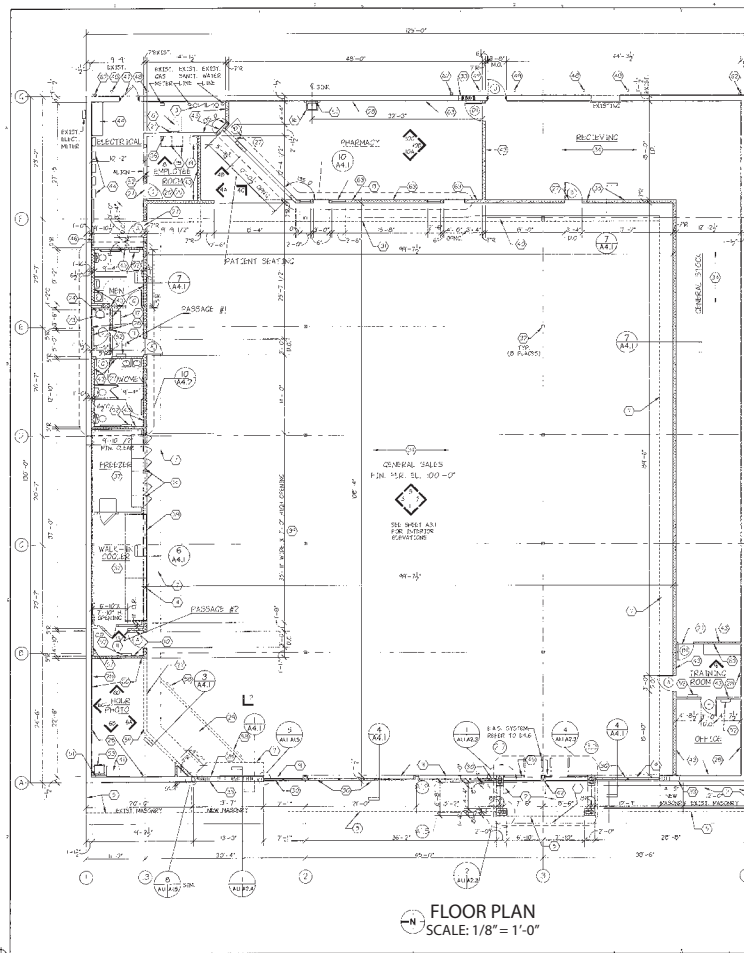
16,250 SF FORMER WALGREENS AVAILABLE FOR SUBLEASE
ALONG S. GRAND BOULEVARD AT BATES STREET
ST. LOUIS, MISSOURI SUBLEASE THROUGH 8/31/2026

PROPERTY IS BEING SUBLEASED AS IS WITH
NO REPRESENTATIONS OR WARRANTIES




5550 S. GRAND BOULEVARD

SITE PLAN

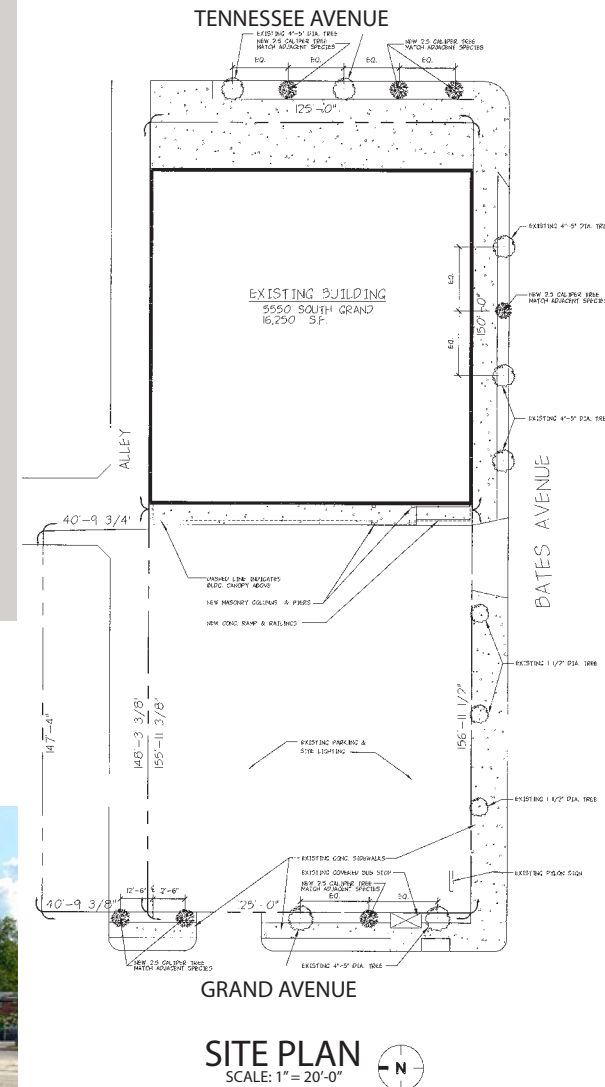
PLEASE CONTACT: L³ CORPORATION
 JOHN NOTTER
 314.282.9825 (DIRECT)
 314.650.3600 (MOBILE)
 JOHN@L3CORP.NET



POPULATION ANALYSIS

POPULATION	HOUSEHOLDS	AVG HH INCOME
 <u>1 MILE</u> 22,931	 <u>1 MILE</u> 9,940	 <u>1 MILE</u> \$58,031
<u>3 MILES</u> 131,194	<u>3 MILES</u> 60,880	<u>3 MILES</u> \$67,659
<u>5 MILES</u> 278,947	<u>5 MILES</u> 131,501	<u>5 MILES</u> \$71,966

VIEW & DOWNLOAD:
DEMO REPORT



- FIRM LEASE TERM THROUGH 8/31/2026
- SUBLEASE RATE IS \$8.50 PSF
- 131,194 POPULATION WITHIN 3 MILES

The information in this flyer has been obtained from sources believed reliable. While we do not doubt its accuracy, we have not verified it and make no guarantee about it. It is your responsibility to independently confirm its accuracy and completeness. Any projections, opinions, assumptions or estimates used are for example only and do not represent the current or future performance of the property. The value of this transaction to you depends on tax and other factors which should be evaluated by your tax, financial and legal advisors. You and your advisors should conduct a careful, independent investigation of the property to determine to your satisfaction the suitability of the property for your needs.

5550 S. GRAND BOULEVARD

AERIAL

PLEASE CONTACT:

L³ CORPORATION

JOHN NOTTER

314.282.9825 (DIRECT)

314.650.3600 (MOBILE)

JOHN@L3CORP.NET



The information in this flyer has been obtained from sources believed reliable. While we do not doubt its accuracy, we have not verified it and make no guarantee about it. It is your responsibility to independently confirm its accuracy and completeness. Any projections, opinions, assumptions or estimates used are for example only and do not represent the current or future performance of the property. The value of this transaction to you depends on tax and other factors which should be evaluated by your tax, financial and legal advisors. You and your advisors should conduct a careful, independent investigation of the property to determine to your satisfaction the suitability of the property for your needs.