



**BASEMENT  
STORAGE  
INCLUDED**



**3375 MO-100**

VILLA RIDGE, MO 63089

**7,000 SF BUILDING**

**AVAILABLE ON 8 ACRES**

**XTEAM**  
RETAIL ADVISORS

# 3375 MO-100

## DEMOGRAPHICS & LAYOUT

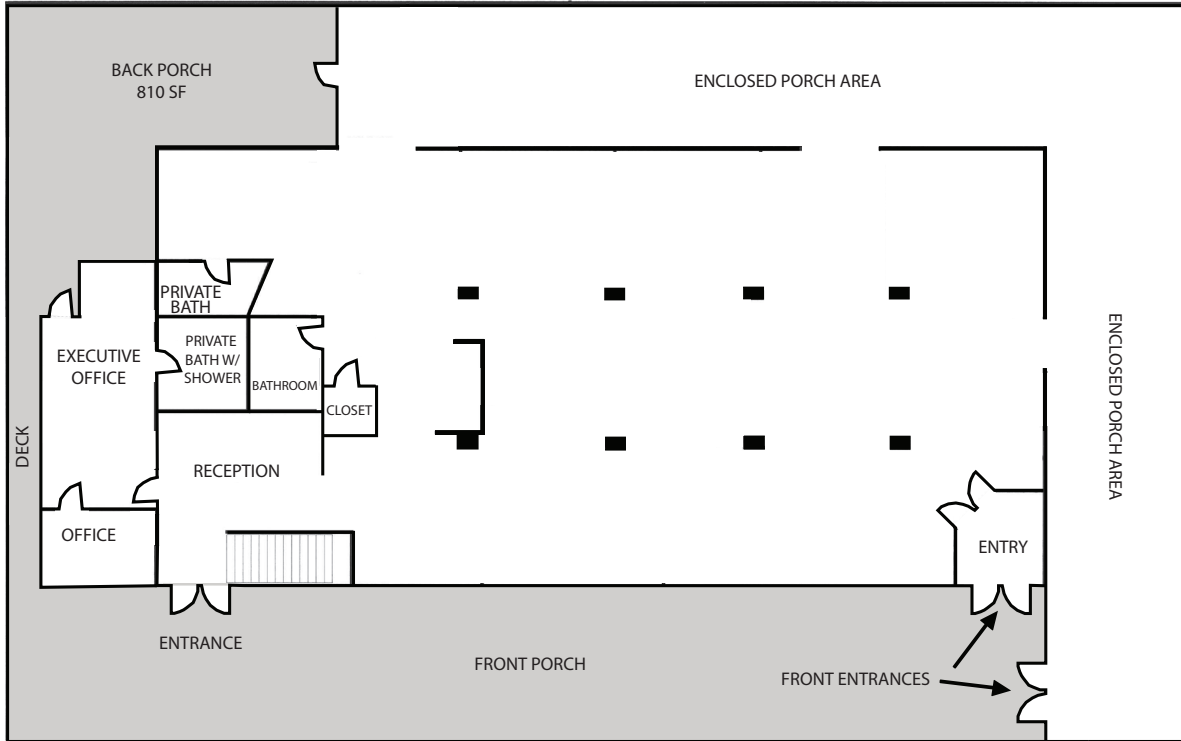
PLEASE CONTACT:

L<sup>3</sup> CORPORATION  
ALANA MOYLAN

314.282.9830 (DIRECT)

314.495.5013 (MOBILE)

ALANA@L3CORP.NET



- STANDALONE BUILDING AVAILABLE FOR LEASE.
- 50 PARKING SPACES & PYLON SIGNAGE INCLUDED.
- GREAT VISIBILITY AND INTERIOR LAYOUT FOR A POTENTIAL RESTAURANT USER WITH COVERED OUTDOOR SEATING CAPABILITY.
- BUILDING LOCATED 0.3 MILES (1 MIN DRIVE) WEST FROM INTERSTATE 44 AND 10.9 MILES (16 MIN DRIVE) EAST FROM WASHINGTON MISSOURI.
- GROWING SURROUNDING COMMUNITY WITH 112 RENTAL HOMES FULLY LEASED ACROSS THE STREET FROM PROPERTY.
- BUILDING HAS ADDITIONAL BASEMENT STORAGE WITH ROLL UP GARAGE FOR DELIVERIES.
- ADDITIONAL LAND COULD BE PROVIDED ADJACENT TO THE PROPERTY.
- CALL BROKER FOR DETAILS

## POPULATION ANALYSIS

		<u>3 MILE</u>	<u>5 MILES</u>	<u>7 MILES</u>	<u>10 MILES</u>
POPULATION		5,598	14,036	28,077	61,931
		<u>3 MILE</u>	<u>5 MILES</u>	<u>7 MILES</u>	<u>10 MILES</u>
HOUSEHOLDS		2,179	5,499	10,977	24,199
		<u>3 MILE</u>	<u>5 MILES</u>	<u>7 MILES</u>	<u>10 MILES</u>
AVG HH INCOME		\$80,713	\$84,784	\$85,246	\$87,981

VIEW &  
DOWNLOAD:

**DEMO  
REPORT**

# 3375 MO-100

## PHOTOS

PLEASE CONTACT:

L<sup>3</sup> CORPORATION  
ALANA MOYLAN

314.282.9830 (DIRECT)

314.495.5013 (MOBILE)

ALANA@L3CORP.NET



**BACK PORCH**



**BASEMENT GARAGE**



**MAIN ROOM**



**UNFINISHED BASEMENT**

# 3375 MO-100

## MARKET AERIAL

PLEASE CONTACT:

L<sup>3</sup> CORPORATION  
ALANA MOYLAN

314.282.9830 (DIRECT)

314.495.5013 (MOBILE)

ALANA@L3CORP.NET



The information in this flyer has been obtained from sources believed reliable. While we do not doubt its accuracy, we have not verified it and make no guarantee about it. It is your responsibility to independently confirm its accuracy and completeness. Any projections, opinions, assumptions or estimates used are for example only and do not represent the current or future performance of the property. The value of this transaction to you depends on tax and other factors which should be evaluated by your tax, financial and legal advisors. You and your advisors should conduct a careful, independent investigation of the property to determine to your satisfaction the suitability of the property for your needs.