



7002 S LINDBERGH BLVD

SAINT LOUIS, MO 63125

0.87 ACRE LOT WITH 2,454 SF BUILDING FOR SALE



7002 S LINDBERGH BLVD

SURVEY & DEMOGRAPHICS

PLEASE CONTACT:

L³ CORPORATION

RICK SPECTOR

314.282.9827 (DIRECT)

314.708.2009 (MOBILE)

RICK@L3CORP.NET

POPULATION ANALYSIS

POPULATION

HOUSEHOLDS

AVG HH INCOME



1 MILE

1 MILE

1 MILE

11,342

5,382

\$68,090

3 MILES

3 MILES

3 MILES

97,750

42,632

\$81,354

5 MILES

5 MILES

5 MILES

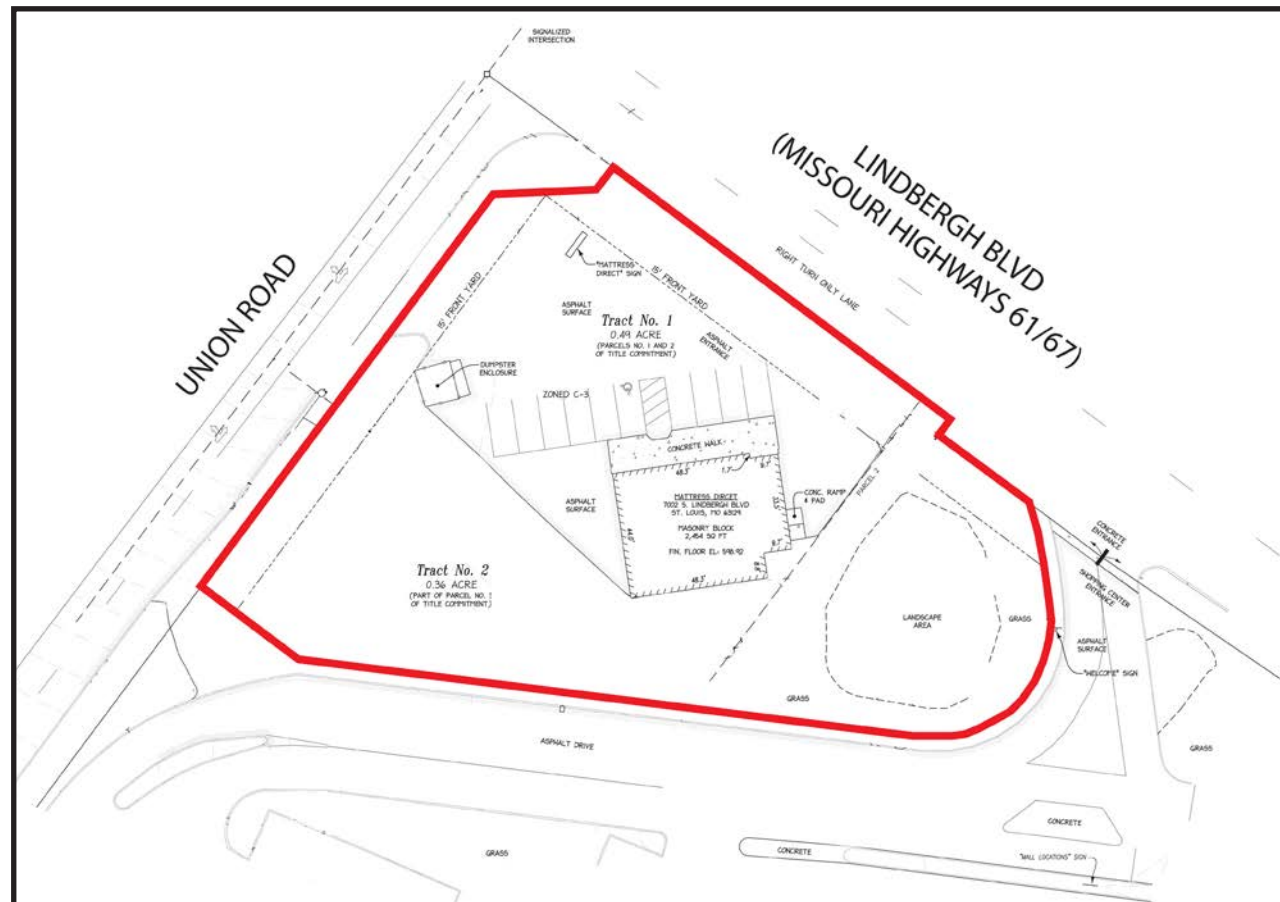
201,553

87,707

\$85,042

VIEW &
DOWNLOAD:

DEMO REPORT



- 0.87 ACRES FOR SALE ON LINDBERGH BLVD (40,796 VPD)
- EXISTING 2,454 SF BUILDING WITH PYLON SIGNAGE
- GREAT VISIBILITY AND FULL ACCESS OFF LINDBERGH BLVD AND UNION RD
- SHARED CROSS ACCESS WITH SOUTH COUNTY MALL
- CONTACT BROKER FOR PRICING



7002 S LINDBERGH BLVD

ZOOM AERIAL

PLEASE CONTACT: L³ CORPORATION
RICK SPECTOR
314.282.9827 (DIRECT)
314.708.2009 (MOBILE)
RICK@L3CORP.NET



The information in this flyer has been obtained from sources believed reliable. While we do not doubt its accuracy, we have not verified it and make no guarantee about it. It is your responsibility to independently confirm its accuracy and completeness. Any projections, opinions, assumptions or estimates used are for example only and do not represent the current or future performance of the property. The value of this transaction to you depends on tax and other factors which should be evaluated by your tax, financial and legal advisors. You and your advisors should conduct a careful, independent investigation of the property to determine to your satisfaction the suitability of the property for your needs.

7002 S LINDBERGH BLVD

MARKET AERIAL

PLEASE CONTACT:

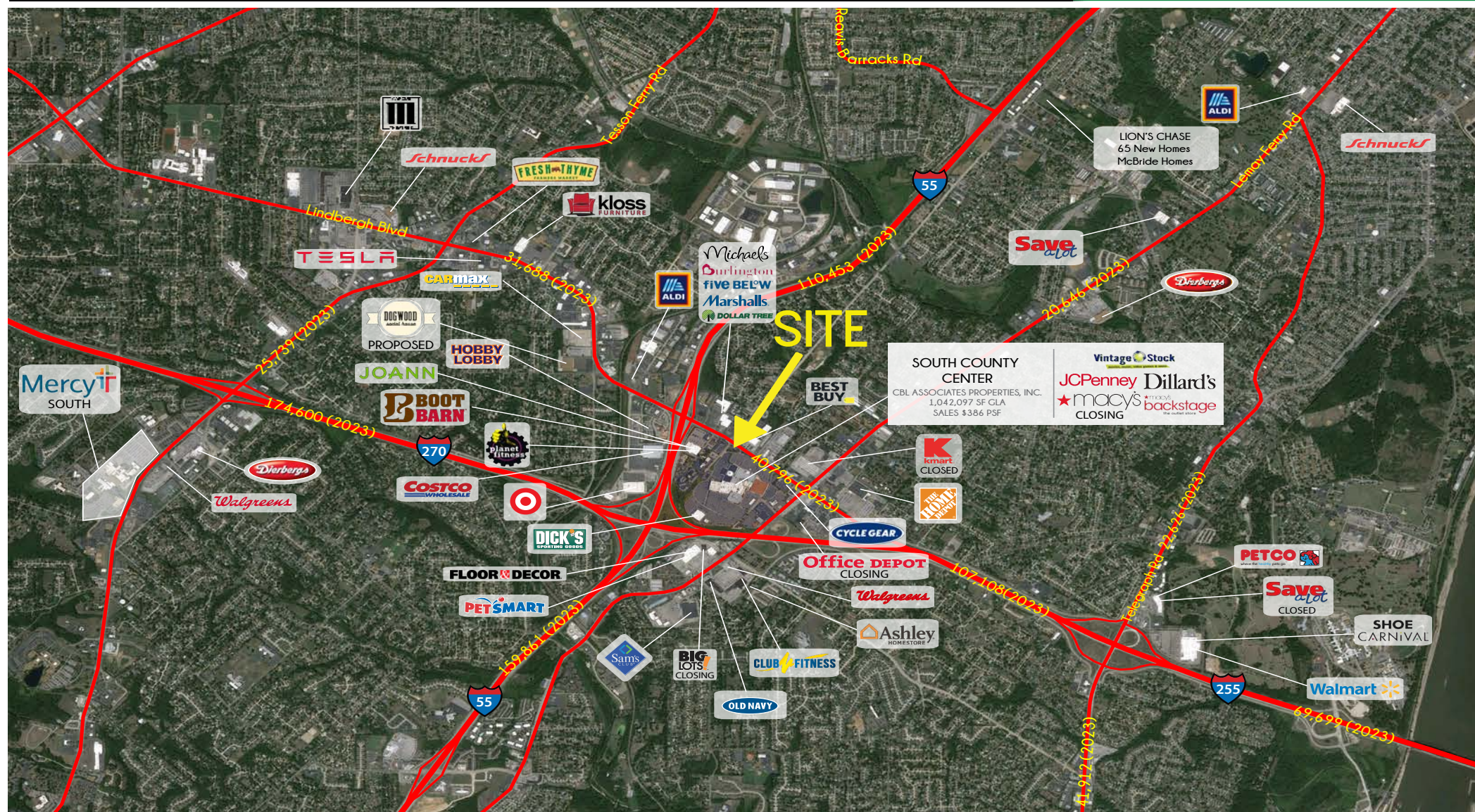
L³ CORPORATION

RICK SPECTOR

314.282.9827 (DIRECT)

314.708.2009 (MOBILE)

RICK@L3CORP.NET



The information in this flyer has been obtained from sources believed reliable. While we do not doubt its accuracy, we have not verified it and make no guarantee about it. It is your responsibility to independently confirm its accuracy and completeness. Any projections, opinions, assumptions or estimates used are for example only and do not represent the current or future performance of the property. The value of this transaction to you depends on tax and other factors which should be evaluated by your tax, financial and legal advisors. You and your advisors should conduct a careful, independent investigation of the property to determine to your satisfaction the suitability of the property for your needs.