

WINGS CORPORATE DR INVESTMENT SALE

Single Tenant Absolute Net Lease

10 Year Term | 9,960 Square
Foot Building | 2.91 Acreage |
Experienced Tenant

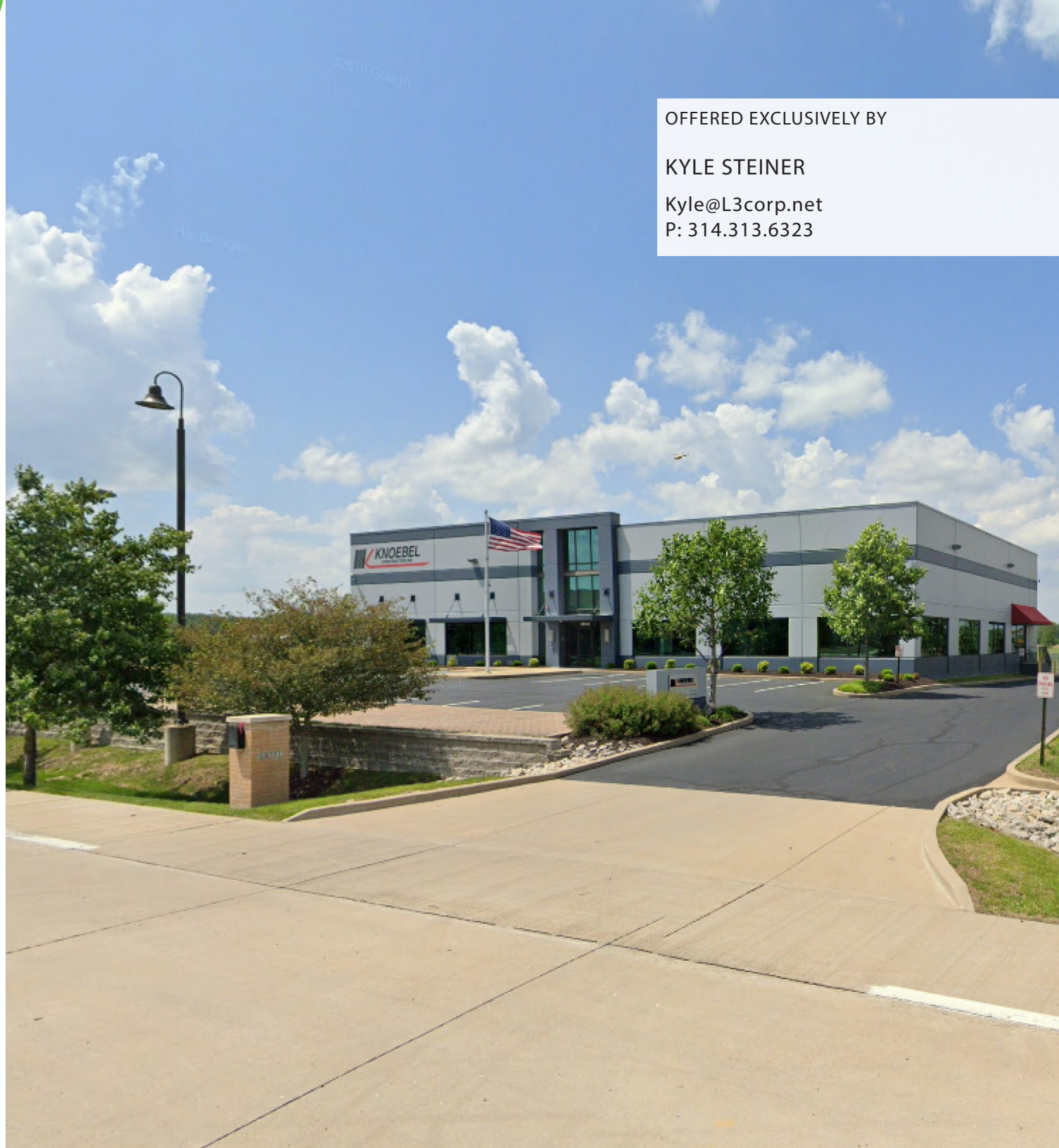
18333 -18341

WINGS CORPORATE DR.
CHESTERFIELD, MO
63005

L³ CORPORATION

1401 S. BRENTWOOD BLVD. SUITE 475
SAINT LOUIS, MO 63144

L3CORP.NET



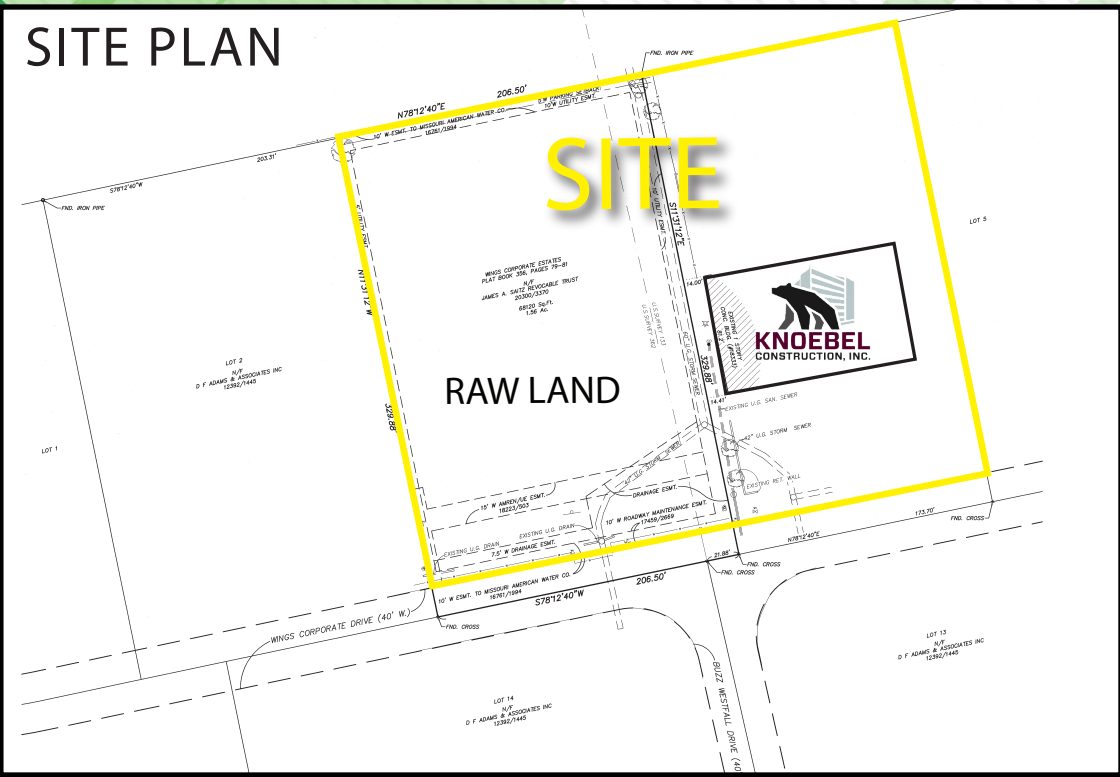
OFFERED EXCLUSIVELY BY

KYLE STEINER


Kyle@L3corp.net

P: 314.313.6323

OFFERING SUMMARY



LEASE DETAILS

Map Link 18333 Wings Corporate Dr. Chesterfield, MO 	
Tenant	Knoebel Construction, Inc. - Opened in 1981
Lease Type	Absolute Net
Property Type	Office Building
Year Built	2014
Primary Term	10 Years (From Closing)
Options	2 X 5 Year
Building Size	9,960 SF
Lot Size	2.91 Acres
Cap Rate	7.5%
NOI	\$184,260
Lease Commencement	Closing



FOR MORE
INFORMATION
CONTACT:

KYLE STEINER
Kyle@L3corp.net
P: 314.313.6323



The information contained herein has been obtained from sources deemed reliable. While every reasonable effort has been made to ensure its accuracy, we cannot guarantee it. No responsibility is assumed for any inaccuracies. Readers are encouraged to consult their professional advisors prior to acting on any of the material contained in this report.

© 2024. All rights reserved.