



XTEAM
RETAIL ADVISORS

18341 WINGS CORPORATE DRIVE

CHESTERFIELD, MO 63005

**LAND FOR SALE IN
THE CHESTERFIELD VALLEY**

18341 WINGS CORPORATE DRIVE

SITE PLAN

PLEASE CONTACT:

L³ CORPORATION




KYLE STEINER

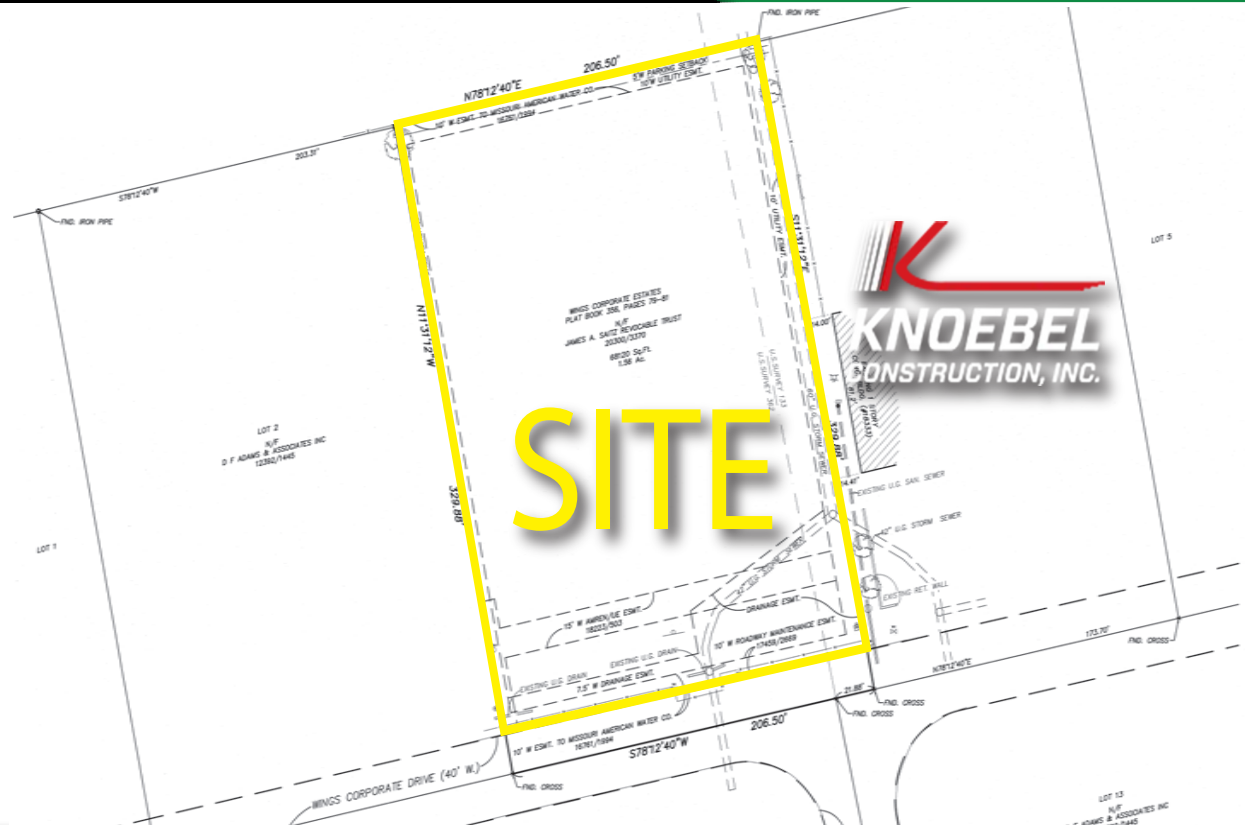
314.282.9835 (DIRECT)

314.313.6323 (MOBILE)

KYLE@L3CORP.NET

POPULATION ANALYSIS

POPULATION	HOUSEHOLDS	AVG HH INCOME
 <u>3 MILE</u> 7,030	 <u>3 MILE</u> 2,171	 <u>3 MILE</u> \$265,948
<u>5 MILES</u> 39,189	<u>5 MILES</u> 13,355	<u>5 MILES</u> \$190,203
<u>10 MILES</u> 381,183	<u>10 MILES</u> 140,534	<u>10 MILES</u> \$133,265



VIEW & DOWNLOAD:

DEMO REPORT

- 1.56 ACRES OF DEVELOPABLE LAND IN THE CHESTERFIELD VALLEY
- AVAILABLE NEXT TO KNOEBEL CONSTRUCTION ALONG WINGS CORPORATE DRIVE
- LOT IS APPROXIMATELY 205' WIDE X 325' DEEP
- ZONED PI FOR PLANNED INDUSTRIAL
- ASKING \$8.50 / SF



18341 WINGS CORPORATE DRIVE

AERIAL

PLEASE CONTACT: L³ CORPORATION
 KYLE STEINER
 314.282.9835 (DIRECT)
 314.313.6323 (MOBILE)
 KYLE@L3CORP.NET



The information in this flyer has been obtained from sources believed reliable. While we do not doubt its accuracy, we have not verified it and make no guarantee about it. It is your responsibility to independently confirm its accuracy and completeness. Any projections, opinions, assumptions or estimates used are for example only and do not represent the current or future performance of the property. The value of this transaction to you depends on tax and other factors which should be evaluated by your tax, financial and legal advisors. You and your advisors should conduct a careful, independent investigation of the property to determine to your satisfaction the suitability of the property for your needs.