



4008 BAYLESS AVE

ST. LOUIS, MO 63125

1,446 SF RETAIL/OFFICE SPACE  
AVAILABLE IN SOUTH CITY

**XTEAM**  
RETAIL ADVISORS

# 4008 BAYLESS AVE

## FLOOR PLAN & DEMOGRAPHICS

PLEASE CONTACT:

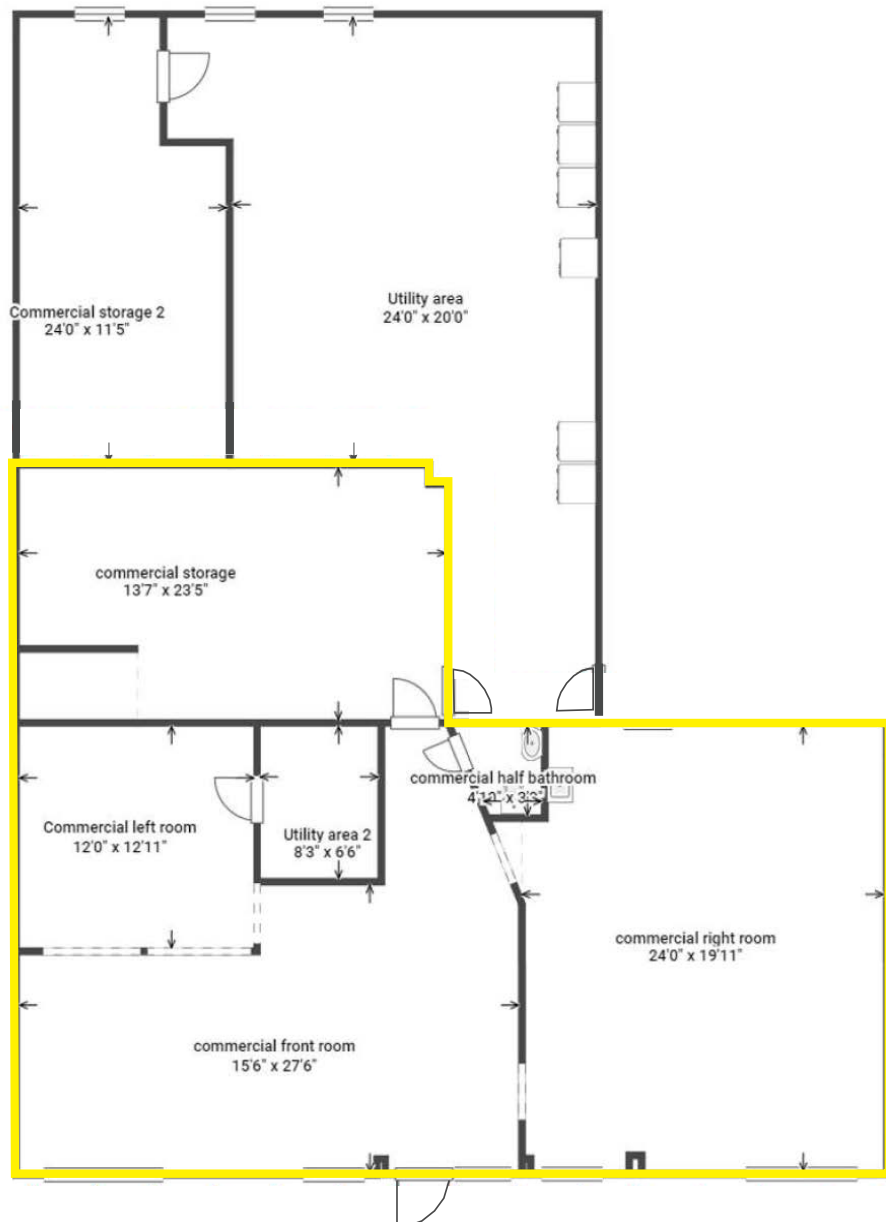
L<sup>3</sup> CORPORATION

REBECCA THESSEN

314.282.9836 (DIRECT)

314.620.0093 (MOBILE)

REBECCA@L3CORP.NET



- NEWLY RENOVATED 1,446 SF COMMERCIAL SPACE FOR OFFICE/RETAIL USER
- CONVENIENTLY LOCATED OFF I-55 WITH HIGH VISIBILITY ON BAYLESS
- ADDITIONAL STORAGE AVAILABLE
- CONTACT BROKER FOR PRICING

VIEW &  
DOWNLOAD:

**DEMO REPORT**

POPULATION ANALYSIS

POPULATION



1 MILE  
13,834

3 MILES  
113,433

5 MILES  
278,089

HOUSEHOLDS



1 MILE  
5,797

3 MILES  
51,080

5 MILES  
126,746

AVG HH INCOME



1 MILE  
\$65,352

3 MILES  
\$69,955

5 MILES  
\$74,869

# 4008 BAYLESS AVE

## PHOTOS

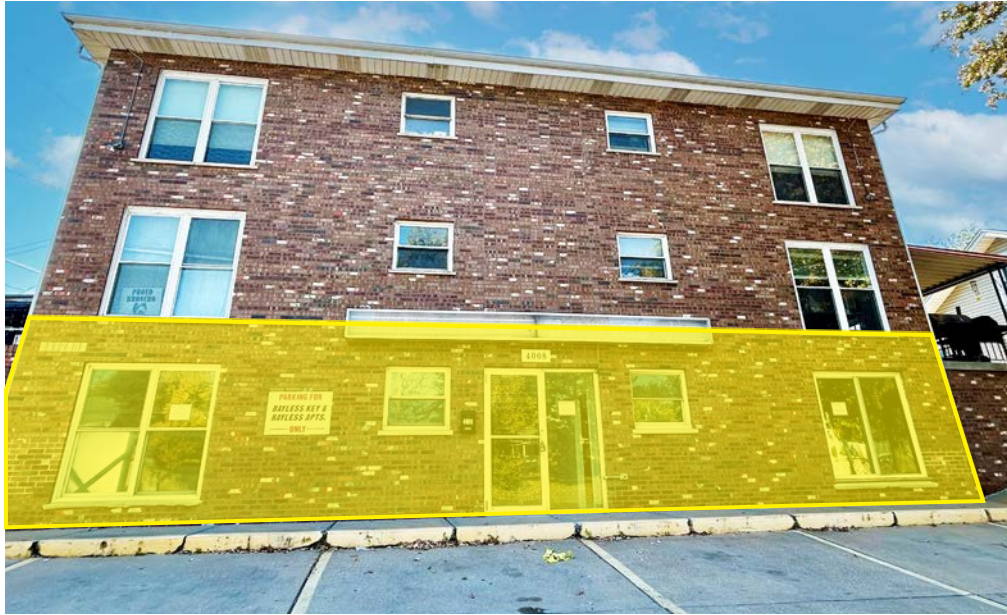
PLEASE CONTACT:

L<sup>3</sup> CORPORATION  
REBECCA THESSEN

314.282.9836 (DIRECT)

314.620.0093 (MOBILE)

REBECCA@L3CORP.NET



The information in this flyer has been obtained from sources believed reliable. While we do not doubt its accuracy, we have not verified it and make no guarantee about it. It is your responsibility to independently confirm its accuracy and completeness. Any projections, opinions, assumptions or estimates used are for example only and do not represent the current or future performance of the property. The value of this transaction to you depends on tax and other factors which should be evaluated by your tax, financial and legal advisors. You and your advisors should conduct a careful, independent investigation of the property to determine to your satisfaction the suitability of the property for your needs.

# 4008 BAYLESS AVE

## MARKET AERIAL

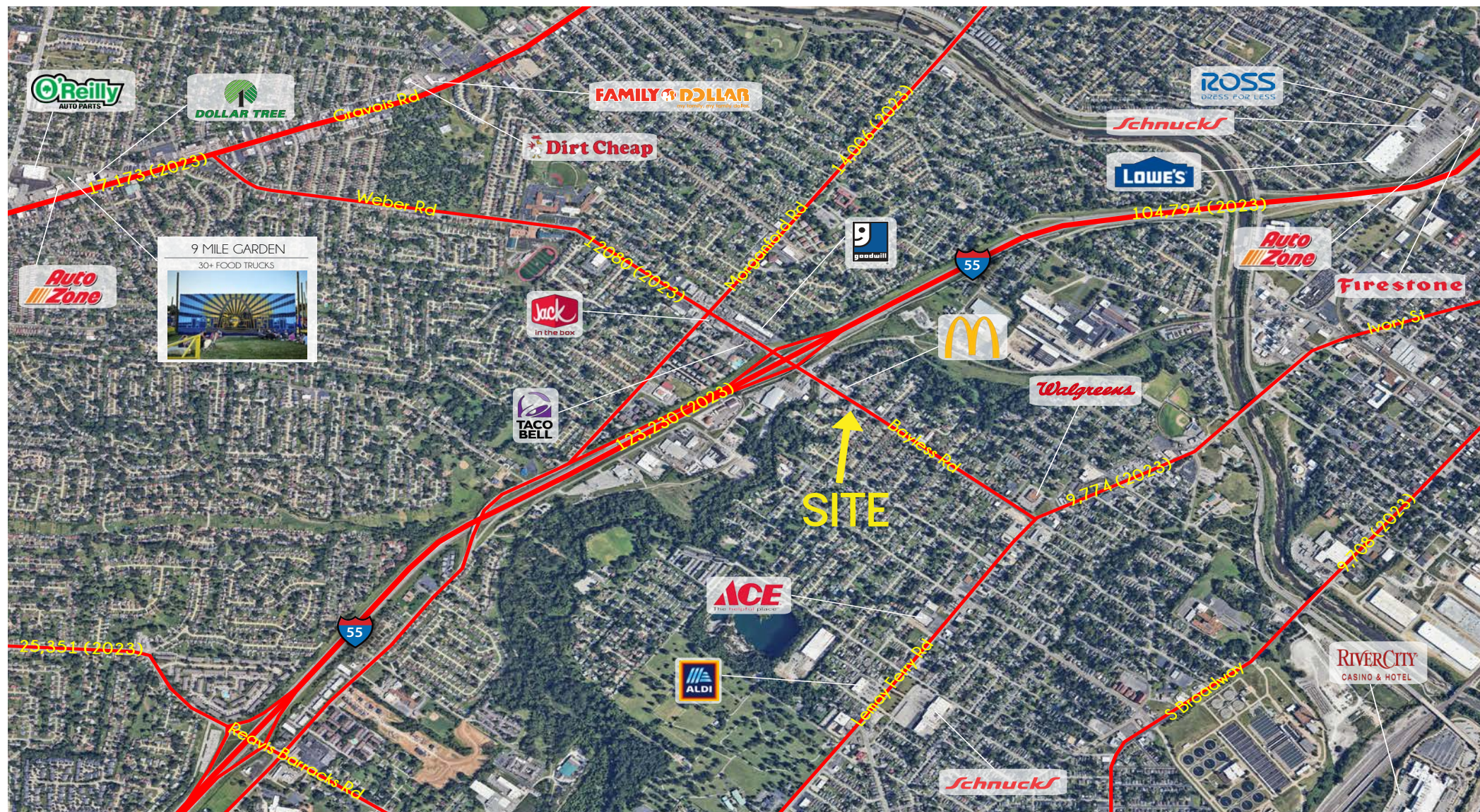
PLEASE CONTACT:

L<sup>3</sup> CORPORATION  
REBECCA THESSEN

314.282.9836 (DIRECT)

314.620.0093 (MOBILE)

REBECCA@L3CORP.NET



The information in this flyer has been obtained from sources believed reliable. While we do not doubt its accuracy, we have not verified it and make no guarantee about it. It is your responsibility to independently confirm its accuracy and completeness. Any projections, opinions, assumptions or estimates used are for example only and do not represent the current or future performance of the property. The value of this transaction to you depends on tax and other factors which should be evaluated by your tax, financial and legal advisors. You and your advisors should conduct a careful, independent investigation of the property to determine to your satisfaction the suitability of the property for your needs.