



ALL OFFERS ARE  
SUBJECT TO  
APPROVAL BY  
WALGREENS' REAL  
ESTATE COMMITTEE



**3720 KINGSHIGHWAY**

ST LOUIS, MO 63115

14.820 SF BUILDING - 1.57 ACRE SITE

SUBLEASE AVAILABLE THROUGH 4/30/2030

SUBLEASE RENT \$8.00 PSF / MONTHLY RENT \$9,880.00

PROPERTY IS BEING SUBLEASED AS IS WITH  
NO REPRESENTATIONS OR WARRANTIES

# 3720 KINGSHIGHWAY

## DEMOS & PHOTOS

PLEASE CONTACT:

L<sup>3</sup> CORPORATION




JOHN NOTTER

314.282.9825 (DIRECT)

314.650.3600 (MOBILE)

JOHN@L3CORP.NET

## POPULATION ANALYSIS

POPULATION	HOUSEHOLDS	AVG HH INCOME
		
<u>1 MILE</u>	<u>1 MILE</u>	<u>1 MILE</u>
12,943	5,560	\$50,156
<u>3 MILES</u>	<u>3 MILES</u>	<u>3 MILES</u>
109,066	49,683	\$66,989
<u>5 MILES</u>	<u>5 MILES</u>	<u>5 MILES</u>
264,049	120,621	\$82,550



## VIEW & DOWNLOAD:

## DEMO REPORT

- SUBLEASE AVAILABLE THROUGH 4/30/2030

# 3720 KINGSHIGHWAY

## SITE PLAN & FLOOR PLAN

PLEASE CONTACT:

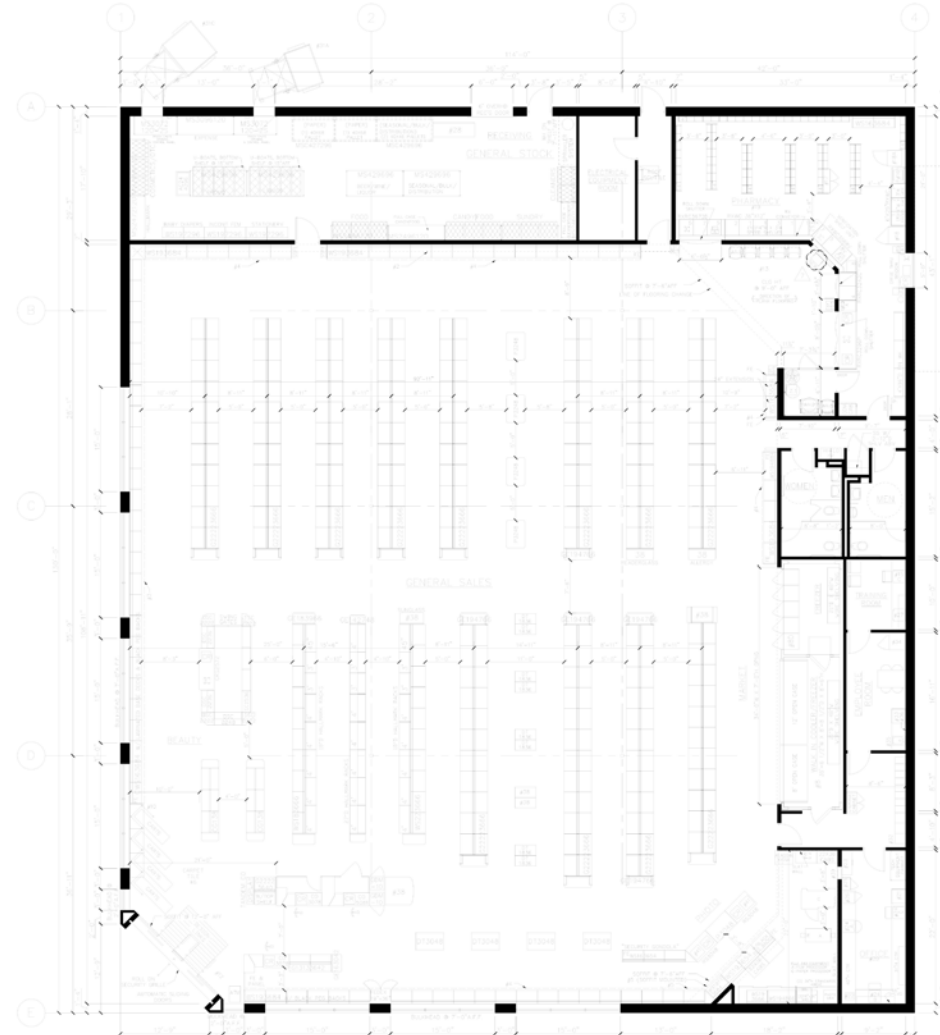
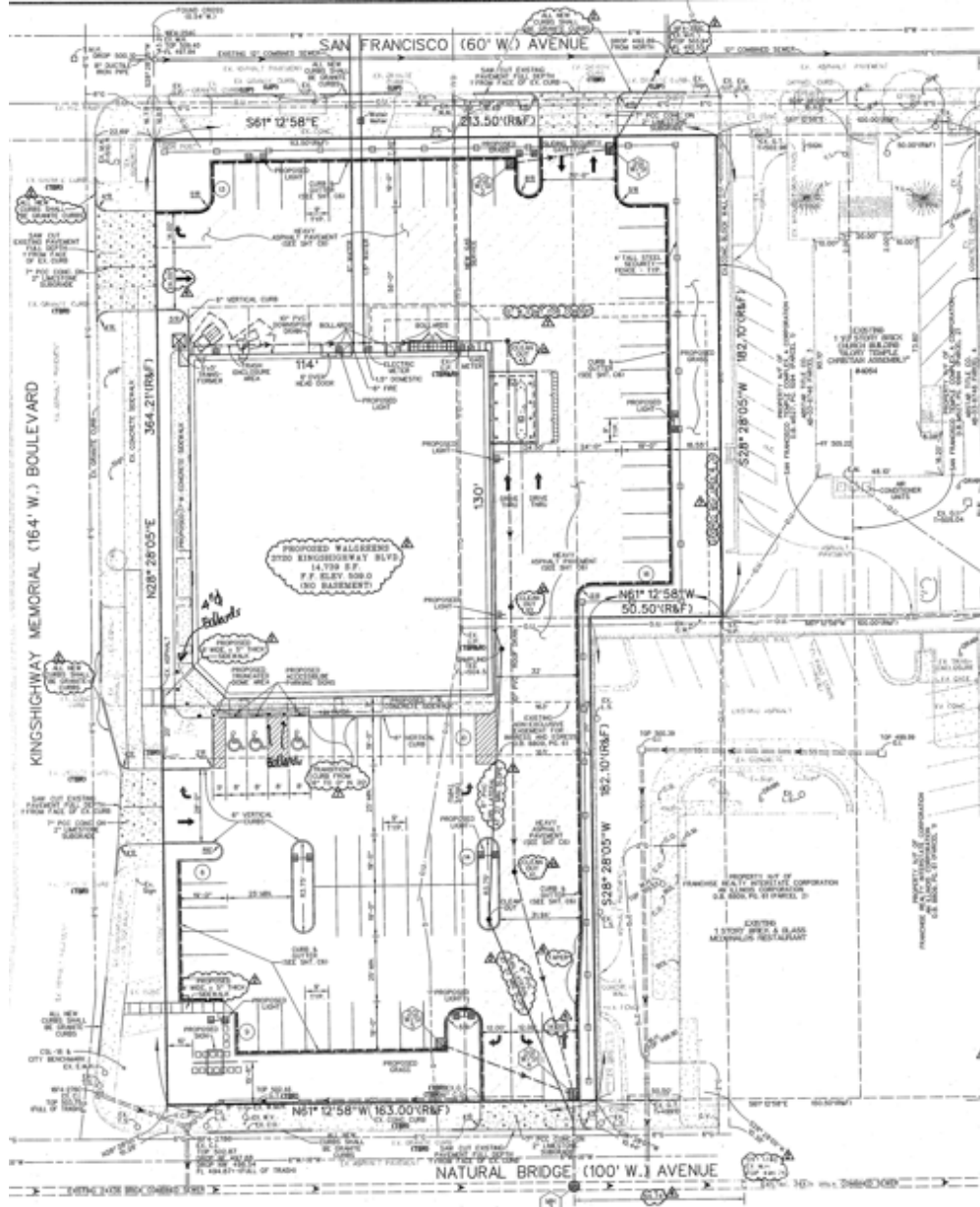
L<sup>3</sup> CORPORATION

JOHN NOTTER

314.282.9825 (DIRECT)

314.650.3600 (MOBILE)

JOHN@L3CORP.NET



1 FIXTURE FLOOR PLAN  
1/8" = 1'-0"

# 3720 KINGSHIGHWAY

## AERIAL

PLEASE CONTACT:

L<sup>3</sup> CORPORATION

JOHN NOTTER

314.282.9825 (DIRECT)

314.650.3600 (MOBILE)

JOHN@L3CORP.NET



The information in this flyer has been obtained from sources believed reliable. While we do not doubt its accuracy, we have not verified it and make no guarantee about it. It is your responsibility to independently confirm its accuracy and completeness. Any projections, opinions, assumptions or estimates used are for example only and do not represent the current or future performance of the property. The value of this transaction to you depends on tax and other factors which should be evaluated by your tax, financial and legal advisors. You and your advisors should conduct a careful, independent investigation of the property to determine to your satisfaction the suitability of the property for your needs.